

July 27, 2012

Re: RapidRun Component Transition – Specification Packets

In May 2012 C2G, formerly Cables To Go, began phasing in a new platform iteration to the RapidRun product line. This new line is RapidRun Multi-Format, also known as RapidRun *Orange*, and consists of a full line of runner cables, flying leads and wall plates that will be phased in over the next six to eight months. Currently, there are products within the RapidRun Multi-Format line that are replacing some products within the RapidRun PC (*Yellow*) product set. In the cases where RapidRun Multi-Format products are being introduced, the equivalent parts of the RapidRun PC line are being discontinued.

The RapidRun Multi-Format products are functional equivalents for the RapidRun PC products. The specifications are superior and compatibility with the RapidRun PC line accessories (flying leads, wall plates) is ensured through the use of specially designed adapters. Attached is a packet containing drawings and technical specifications that indicate the cable construction, pin out designs and performance characteristics between the two product lines for Runners, Flying Leads and Wall Plates.

Should you have additional questions or concerns, please contact Chris Cowlan, RapidRun Product Manager, at (937) 405-9483 or ccowlan@lastar.com.

Sincerely,



Garry Dukes
Director of Product Management
Lastar Inc., dba C2G



RapidRun[®] Single Gang HD15 + 3.5mm + RCA Audio/Video Wall Plate

- Color Code: Orange (for use with Multi-Format runners)
- Supports resolutions up to 1600 x 1200 pixels (UXGA resolution)
- Three 28AWG coaxial cables with braided copper shielding, three 24AWG individually shielded twisted pair, and a single 24AWG pair
- Fits into most J-boxes.
- Lifetime Warranty

*The specifications apply only to the raw cable used to construct the cable assemblies



Specifications: RapidRun® Single Gang HD15 + 3.5mm + RCA Audio/Video Wall Plate

Electrical Characteristics:

3 Coax Conductors:

Impedance:	75 ± 5Ω
Capacitance:	71 ± 2pF/ ft nom
Velocity of Propagation:	78 ± 1%
DC Resistance:	237 ± 10Ω/km
Dielectric Strength:	500VAC/1 minute min.
Insulation Resistance (500V):	10MΩ/KM
Attenuation (dB/6m):	

	Red Coax	Green Coax	Blue Coax
1MHz	0.15	0.14	0.14
10MHz	0.86	0.97	0.41
100MHz	2.98	3.23	1.26
200MHz	4.45	4.87	1.82
500MHz	6.72	7.75	3.00
700MHz	9.95	12.01	3.64
1000MHz	13.20	17.52	4.59

3 Twisted Pair Conductors:

DC Resistance:	93.25Ω/m at 20°C
Dielectric Strength:	750VAC/ minute min.
Insulation Resistance:	100 Mohm/KM at 20°C

Physical Characteristics:

Voltage Rating:	30V
Temperature Rating:	80°C
Temperature Range:	-25° ~ 80°C
Minimum Bend Radius	90mm

Approvals:	RoHS Compliant
Warranty:	Lifetime
Package Type:	Box

Conductor (Qty. 3):

Conductor Type:	28AWG 7/0.127 Tinned Copper
Dielectric:	Minimum Avg. Thickness: 1.57mm Foam PE
Shield:	Spiral 90% Coverage Tinned Copper
Insulation:	Minimum Avg. Thickness: 0.23mm PVC: (1) red, (1) blue, (1) green

Conductor (Qty. 3 twisted pair + 2 conductors):

Conductor Type:	24AWG 7/0.2 Tinned Copper
Foil Shield:	Aluminum 100% coverage
Insulation:	Minimum Avg. Thickness: 0.23mm PVC

Overall Cable

Jacket:	Orange Heat Shrink
---------	--------------------

HD15 Connector (Qty. 1):

Connector Type:	High Density D-Sub 15 pin
Gender:	Female
Contact Material:	Brass, 3µm Gold Plating
Insulation:	Black PBT

Note: Pin 9 is not loaded.

3.5mm Connector (Qty. 1):

Connector Type:	3.5mm Stereo
Gender:	Female
Contact Material:	Brass, 3µm Nickel Plating

RCA Connector (Qty. 3):

Connector Type:	RCA
Gender:	Female
Contact Material:	Brass, 3µm Nickel Plating
Insulation:	Yellow, Red, and White PBT

RapidRun Din Connector (Qty. 1):

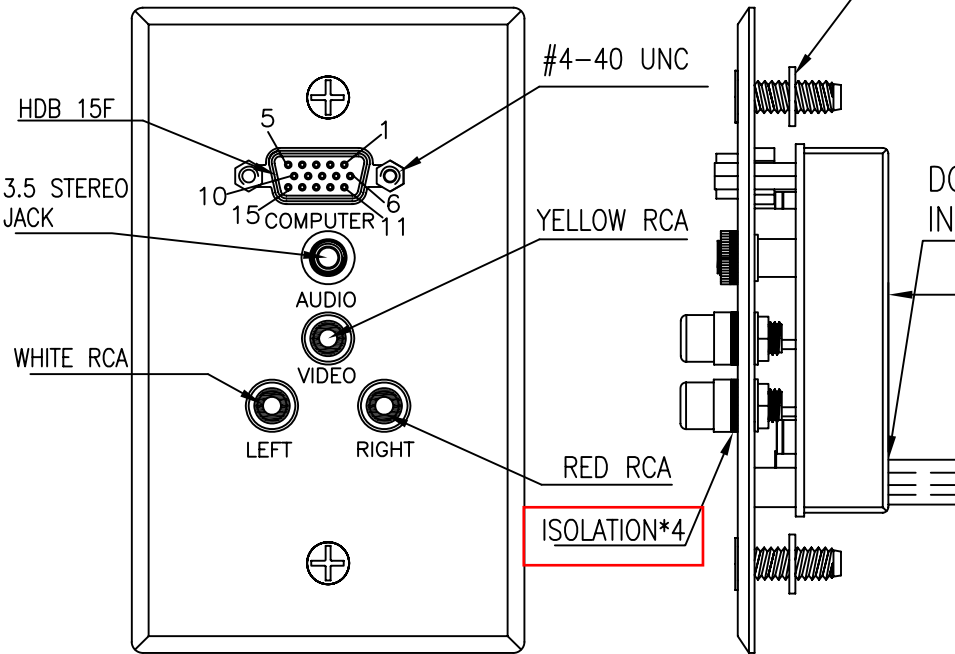
Connector Type:	DIN 15 pin
Gender:	Male
Contact Material:	Brass, 3µm Gold Plating
Insulation:	Black PBT

Item	Description	Weight (lbs)
60030	RapidRun Single Gang Integrated HD15 + 3.5mm + RCA Audio/Video Wall Plate - White	0.39
60032	RapidRun Single Gang Integrated HD15 + 3.5mm + RCA Audio/Video Wall Plate - Brushed Aluminum	0.39



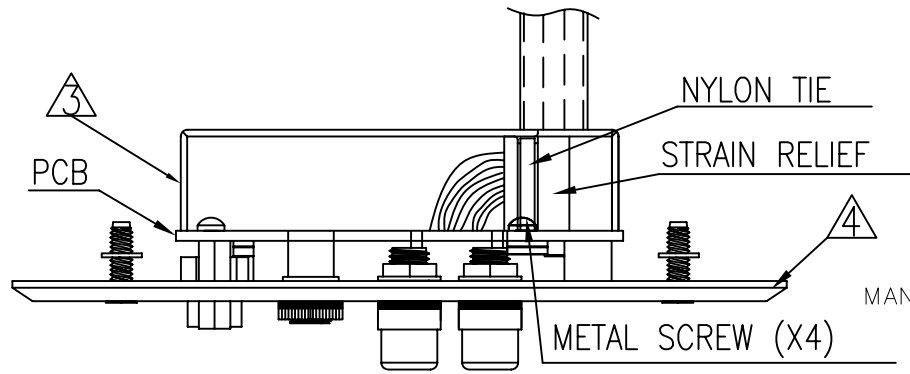
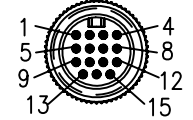
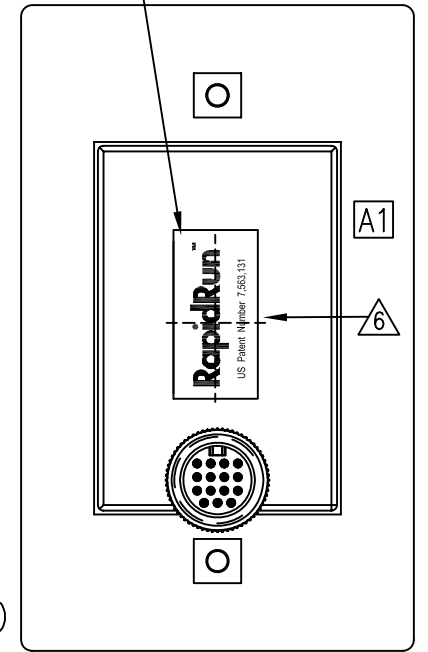
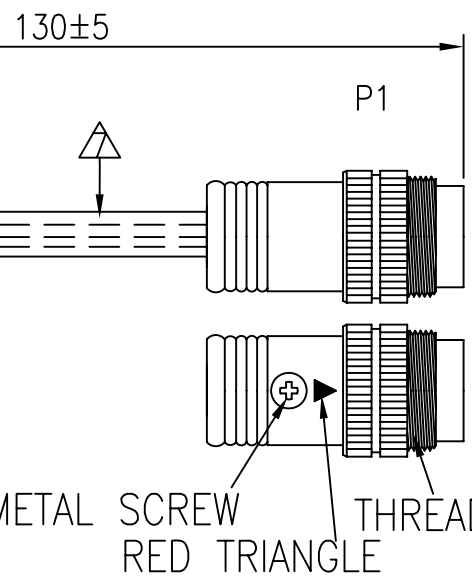
REV.	DESCRIPTION	ECO NO.	DATE
A	CHANGE THE DRAWING FRAME AND LABEL	20120413	07.06.12

Moving the washer 5mm away from the wall plates.



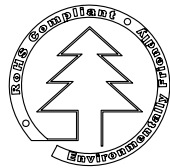
STAMP ON THE CASE'S CENTER

DO NOT MOLD THE TUBE IN THE STRAIN RELIEF.



SECTION C-C

MANUFACTURED IN CHINA



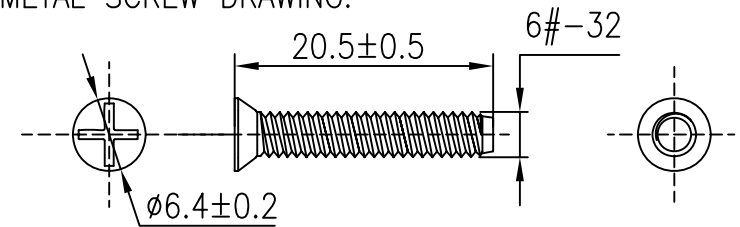
<input type="checkbox"/> O
<input checked="" type="checkbox"/> S

DRAWING APPROVED _____ DATE: _____		SAMPLE APPROVED PER _____ DATE: _____	
<small>PROPRIETARY & CONFIDENTIAL. THE INFORMATION CONTAINED IN THIS DRAWING IS THE SOLE PROPERTY OF C2G. ANY REPRODUCTION IN PART OR AS A WHOLE WITHOUT THE WRITTEN PERMISSION OF C2G IS PROHIBITED.</small>			
mm SCALE NONE SHEET 1/4	TITLE DIN15P MALE TO HDB15P + 3 RCA + Ø3.5 STEREO CUS. NAME C2G		
DIMENSIONAL TOLERANCES UNLESS OTHERWISE NOTED .X ± .XX ± .XXX ± ANGLES ±	CUS. P/N SEE THE P/N CHART DRAW NO. P1108022-E		
REV. A CUS. REV.	ENG. Chen CHECKED APPROVED Sean	DATE 07-06-2012 DATE DATE 07-06-2012	

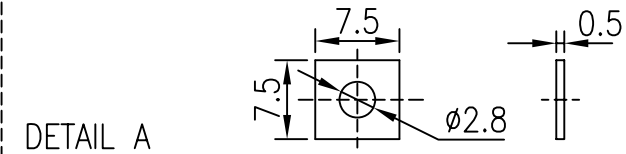
NOTES:

1. (1) [28AWG X 1COAX, SPIRAL (90%MIN) SHIELDED, 75Ω, UL1354] X 3, PVC JACKET COLOR SEE PIN OUT.
- (2) WIRES: 24AWG, UL1061 .
- (3) 24AWG X 1PR, DRAIN AND AL WRAP.
2. CONNECTOR: P1: DIN 15PIN MALE, SOLDER TYPE, GOLD PLATED CONTACTS, BLACK INSULATION, ASSEMBLY TYPE, WITH METAL ASSEMBLY SHELL, WITHOUT KEY, NICKEL PLATED SHELL.
RCA FEMALE: LOCK PLANK TYPE, NICKEL PLATED CONTACTS AND SHELL, INSULATION COLOR SEE VIEW.
HIGH DENSITY D-SUB 15PIN FEMALE, PCB TYPE, GOLD FLASH CONTACTS, BLACK INSULATION, WITH NUT ON THE BACKSHELL.
3.5 STEREO JACK: SOLDER TYPE, NICKEL PLATED CONTACTS AND SHELL.
3. BLACK (CTG-001) ABS PLASTIC ASSEMBLY CASE.
4. METAL BRACKET: BRUSHED ALUMINUM 5052, RIGIDITY HRB22° ANODIZING.
LOGO MARKING AND SURFACE TREATMENT SEE THE P/N CHART.
5. METAL SCREW HEAD SURFACE TREATMENT SEE THE P/N CHART.
6. LABEL: WHITE BACKGROUND WITH BLUE LETTERS.
7. ORANGE HEAT SHRINK TUBE MUST BE SHRINKED.
8. STRAIN RELIEF HOOD: MOLDED BLACK (CTG-001) PVC.
9. ALL MATERIALS ARE RoHS COMPLIANT.
10. TESTING: 100% ELECTRICAL TEST AT 10M OHM INSULATION RESISTANCE.
11. PACKING: THEN EACH PRODUCT IN A SMALL WHITE BOX.
BAR CODE LABEL (WHITE BACKGROUND WITH BLACK LETTERS, SEE "DETAIL B") TO BE PASTED ON THE SMALL WHITE BOX.

METAL SCREW DRAWING:



PLASTIC GASKET DRAWING:



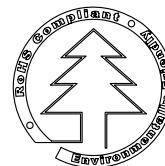
[A2] CODE UPC-A
"*" CHECK DIGIT

"xxxxxx"&"*****" SEE "P/N CHART"
DETAIL B

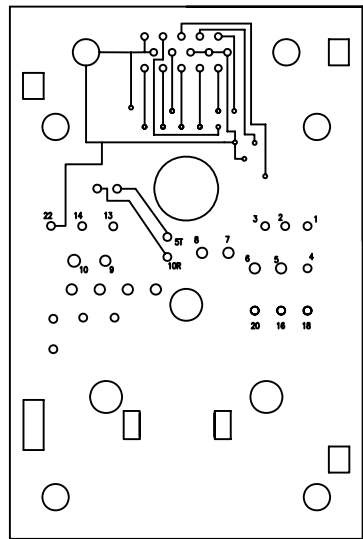
P/N CHART

60031	WHITE	BLACK (PANTONE BLACK C)	60031	BLACK (PANTONE BLACK C)	BLK
60030	BLACK	WHITE (RAL9003)	60030	WHITE (RAL9003)	WHT
60047	BLACK	IVORY (PANTONE 4545C)	60047	IVORY (PANTONE 4545C)	ivory
60032	BLACK	ALUMINUM	60032	BLUE ZINC	
P/N	LOGO MARKING COLOR	SURFACE TREATMENT	BAR CODE xxxxxx	METAL SCREW	*****

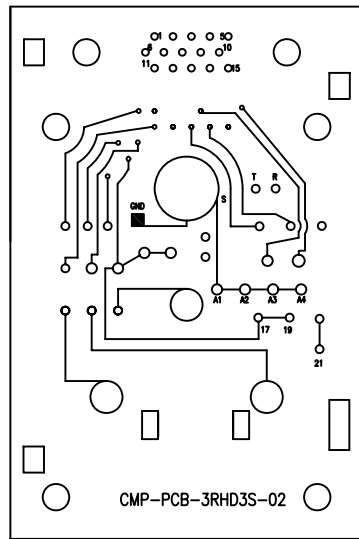
MANUFACTURED IN CHINA



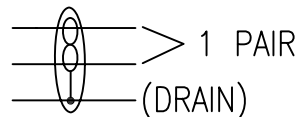
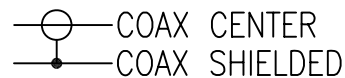
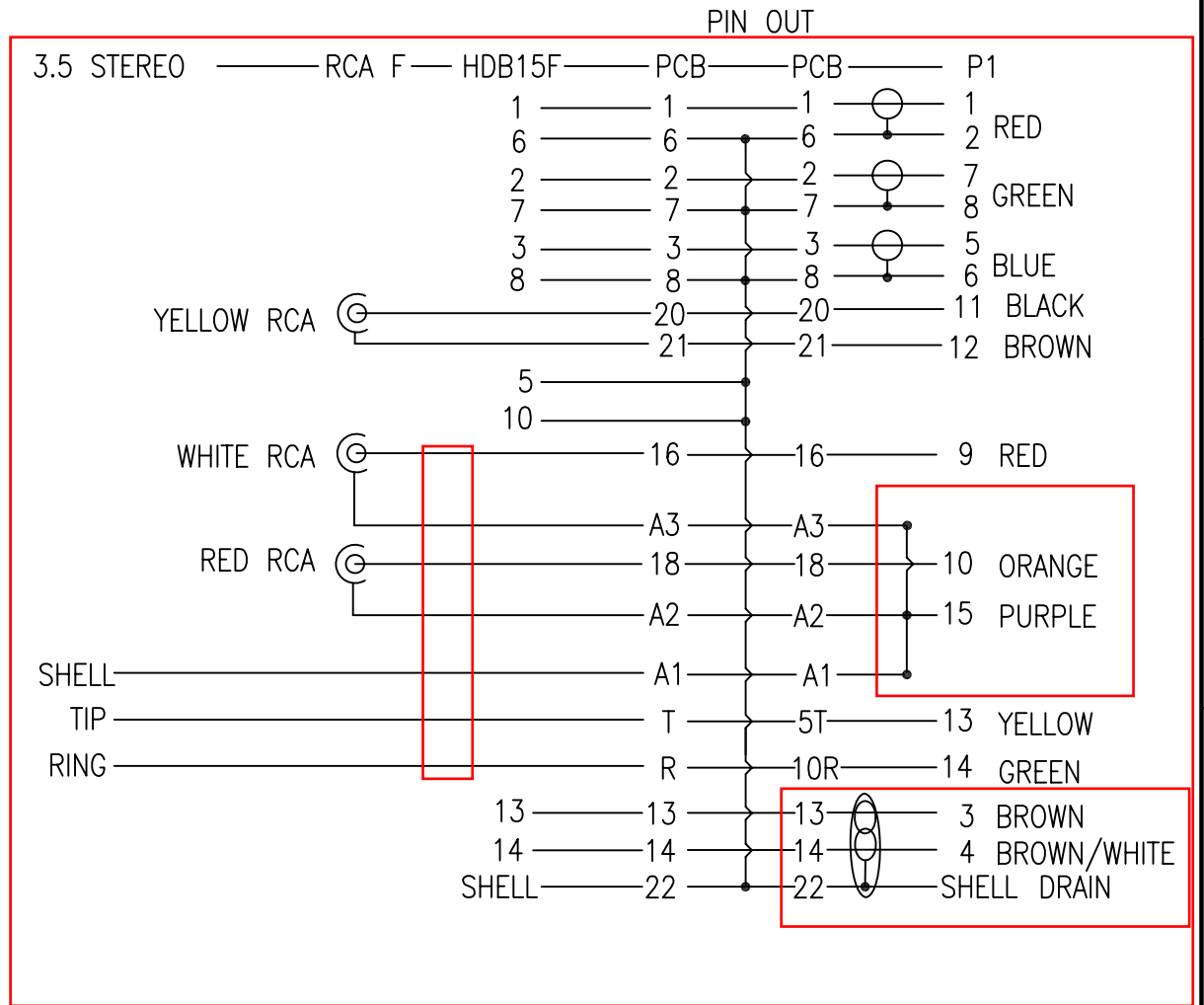
DRAWING APPROVED _____ DATE: _____		SAMPLE APPROVED PER _____ DATE: _____	
<small>PROPRIETARY & CONFIDENTIAL. THE INFORMATION CONTAINED IN THIS DRAWING IS THE SOLE PROPERTY OF C2G. ANY REPRODUCTION IN PART OR AS A WHOLE WITHOUT THE WRITTEN PERMISSION OF C2G IS PROHIBITED.</small>			
mm SCALE NONE SHEET 2/4	TITLE DIN15P MALE TO HDB15P + 3 RCA + 3.5 STEREO CUS. NAME C2G		
DIMENSIONAL TOLERANCES UNLESS OTHERWISE NOTED .X ± .XX ± .XXX ± ANGLES ±		CUS. P/N SEE THE P/N CHART	
REV. A	CUS. REV.	DRAW NO. P1108022-E	ENG. Chen DATE 07-06-2012 CHECKED _____ DATE _____ APPROVED Sean DATE 07-06-2012



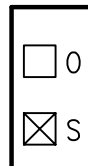
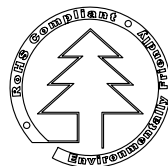
PCB SOLDER SURFACE



PCB FRONT SURFACE



MANUFACTURED IN CHINA



DRAWING APPROVED _____		DATE: _____																			
SAMPLE APPROVED PER _____		DATE: _____																			
<small>PROPRIETARY & CONFIDENTIAL. THE INFORMATION CONTAINED IN THIS DRAWING IS THE SOLE PROPERTY OF C2G. ANY REPRODUCTION IN PART OR AS A WHOLE WITHOUT THE WRITTEN PERMISSION OF C2G IS PROHIBITED.</small>																					
<table border="1"> <tr> <td></td> <td>mm</td> </tr> <tr> <td>SCALE</td> <td>NONE</td> </tr> <tr> <td>SHEET</td> <td>3/4</td> </tr> </table>		mm	SCALE	NONE	SHEET	3/4	<table border="1"> <tr> <td>TITLE</td> <td>DIN15P MALE TO HDB15P + 3 RCA + Ø3.5 STEREO</td> </tr> <tr> <td>CUS. NAME</td> <td>C2G</td> </tr> <tr> <td>CUS. P/N</td> <td>SEE THE P/N CHART</td> </tr> <tr> <td>DRAW NO.</td> <td>P1108022-E</td> </tr> </table>	TITLE	DIN15P MALE TO HDB15P + 3 RCA + Ø3.5 STEREO	CUS. NAME	C2G	CUS. P/N	SEE THE P/N CHART	DRAW NO.	P1108022-E						
	mm																				
SCALE	NONE																				
SHEET	3/4																				
TITLE	DIN15P MALE TO HDB15P + 3 RCA + Ø3.5 STEREO																				
CUS. NAME	C2G																				
CUS. P/N	SEE THE P/N CHART																				
DRAW NO.	P1108022-E																				
<table border="1"> <tr> <td>DIMENSIONAL TOLERANCES UNLESS OTHERWISE NOTED</td> <td></td> </tr> <tr> <td>.X ±</td> <td>.XX ±</td> </tr> <tr> <td>.XXX ±</td> <td>ANGLES ±</td> </tr> <tr> <td>REV. A</td> <td>CUS. REV</td> </tr> </table>	DIMENSIONAL TOLERANCES UNLESS OTHERWISE NOTED		.X ±	.XX ±	.XXX ±	ANGLES ±	REV. A	CUS. REV	<table border="1"> <tr> <td>ENG.</td> <td>Chen</td> <td>DATE</td> <td>07-06-2012</td> </tr> <tr> <td>CHECKED</td> <td></td> <td>DATE</td> <td></td> </tr> <tr> <td>APPROVED</td> <td>Sean</td> <td>DATE</td> <td>07-06-2012</td> </tr> </table>	ENG.	Chen	DATE	07-06-2012	CHECKED		DATE		APPROVED	Sean	DATE	07-06-2012
DIMENSIONAL TOLERANCES UNLESS OTHERWISE NOTED																					
.X ±	.XX ±																				
.XXX ±	ANGLES ±																				
REV. A	CUS. REV																				
ENG.	Chen	DATE	07-06-2012																		
CHECKED		DATE																			
APPROVED	Sean	DATE	07-06-2012																		



RapidRun[®] Single Gang Integrated HD15 + 3.5mm + RCA Audio/Video Wall Plate

- Color Code: Yellow (for use with PC runners)
- Supports resolutions up to 1600 x 1200 pixels (UXGA resolution)
- Three 28AWG coaxial cables with braided copper shielding, three 24AWG twisted pair, and a single 24AWG pair
- Fits into most J-boxes.
- Lifetime Warranty

*The specifications apply only to the raw cable used to construct the cable assemblies

Specifications: RapidRun® Single Gang Integrated HD15 + 3.5mm + RCA Audio/Video Wall Plate

Conductor (Qty. 3):

Conductor Type:	28AWG 7/0.127 Tinned Copper
Dielectric:	Minimum Avg. Thickness: 1.57mm Foam PE
Shield:	Spiral 90% Coverage Tinned Copper
Insulation:	Minimum Avg. Thickness: 0.23mm PVC: (1) red, (1) blue, (1) green

Conductor (Qty. 3 twisted pair + 2 conductors):

Conductor Type:	24AWG 7/0.2 Tinned Copper
Insulation:	Minimum Avg. Thickness: 0.23mm PVC

HD15 Connector (Qty. 1):

Connector Type:	High Density D-Sub 15 pin
Gender:	Female
Contact Material:	Brass, 3µm Gold Plating
Insulation:	Black PBT

Note: Pin 9 is not loaded.

3.5mm Connector (Qty. 1):

Connector Type:	3.5mm Stereo
Gender:	Female
Contact Material:	Brass, 3µm Nickel Plating

RCA Connector (Qty. 3):

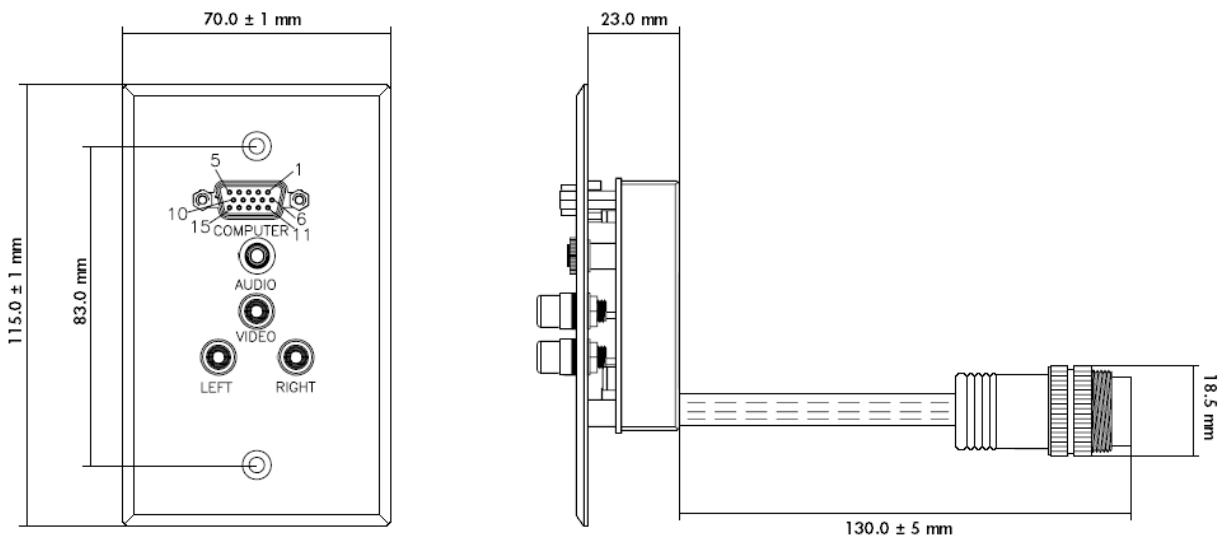
Connector Type:	RCA
Gender:	Female
Contact Material:	Brass, 3µm Nickel Plating
Insulation:	Yellow, Red, and White PBT

RapidRun Din Connector (Qty. 1):

Connector Type:	DIN 15 pin
Gender:	Male
Contact Material:	Brass, 3µm Gold Plating
Insulation:	Black PBT

Overall Cable

Jacket: Yellow Heat Shrink



Specifications: RapidRun® Single Gang Integrated HD15 + 3.5mm + RCA Audio/Video Wall Plate

Electrical Characteristics:

3 Coax Conductors:

Impedance:	75 ± 5Ohm		
Capacitance:	71 ± 2pF/ ft nom		
Velocity of Propagation:	78 ± 1%		
DC Resistance:	237 ± 10Ω/km		
Dielectric Strength:	500VAC/1 minute min.		
Insulation Resistance (500V):	10MΩ/KM		
Attenuation (dB/6m):	Red Coax	Green Coax	Blue Coax
1MHz	0.1464	0.1376	0.1419
10MHz	0.86	0.97	0.4058
100MHz	2.98	3.23	1.259
200MHz	4.45	4.87	1.823
500MHz	6.72	7.75	3.0028
700MHz	9.95	12.01	3.64
1000MHz	13.20	17.52	4.5923

3 Twisted Pair Conductors

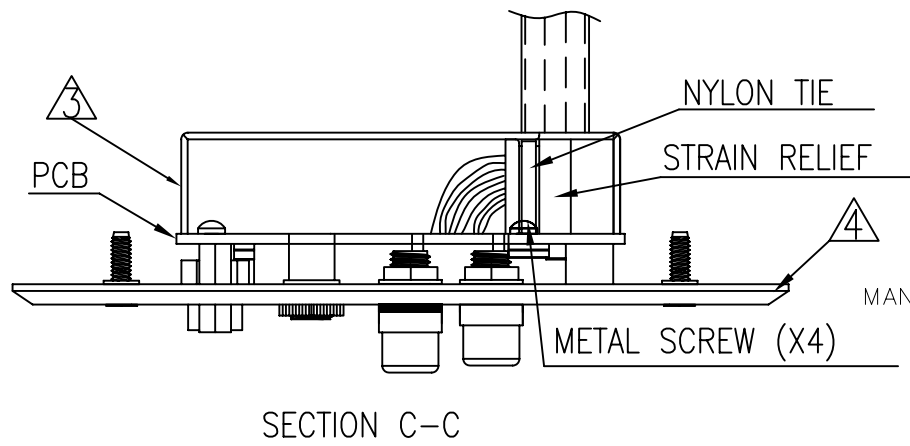
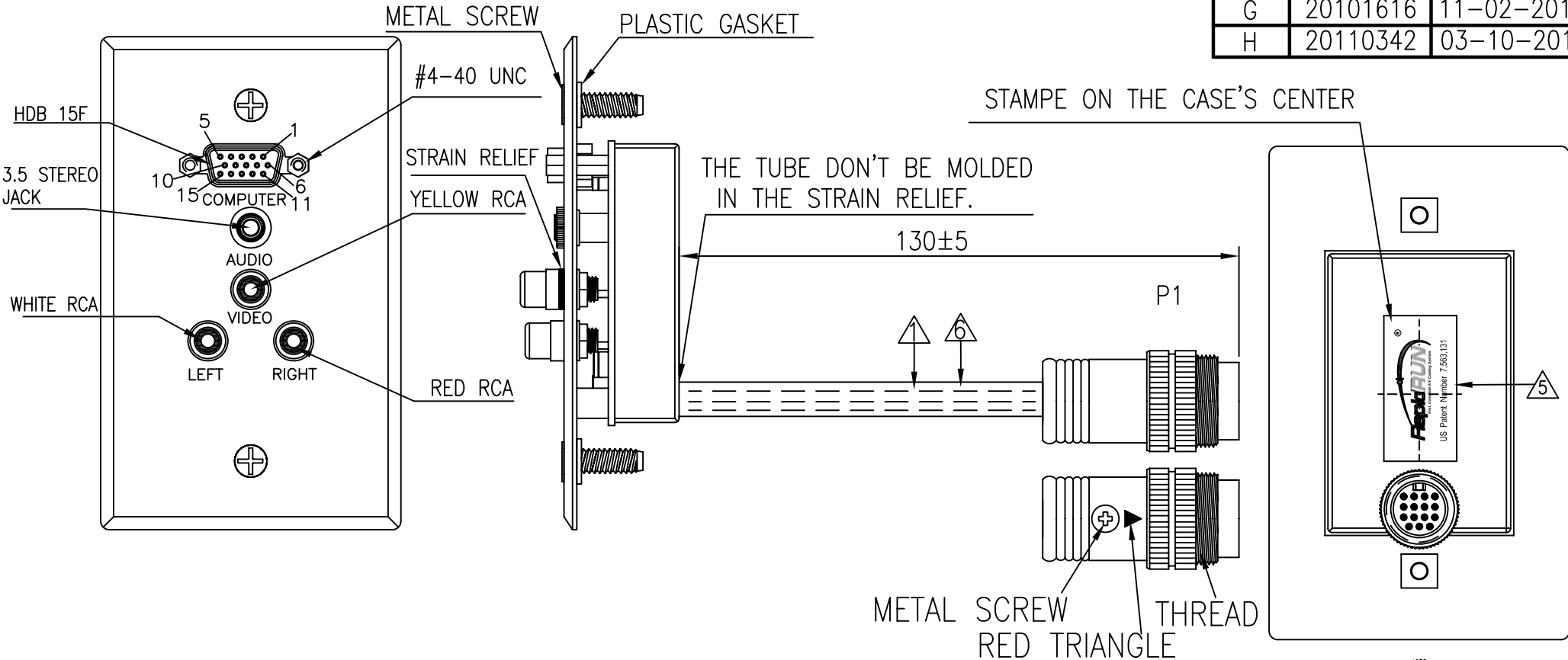
DC Resistance:	93.25Ω/m at 20°C
Dielectric Strength:	750VAC/ minute min.
Insulation Resistance:	100 Mohm/KM at 20°C

Physical Characteristics:

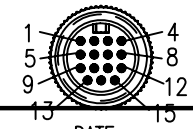
Voltage Rating:	30V
Temperature Rating:	80°C
Temperature Range:	-25° ~ 80°C
Minimum Bend Radius	90mm
Approvals:	RoHS Compliant
Warranty:	Lifetime
Package Type:	Box

Item	Description	Weight (lbs)
42313	RapidRun Single Gang Integrated HD15 + 3.5mm + RCA Audio/Video Wall Plate - White	0.39
42314	RapidRun Single Gang Integrated HD15 + 3.5mm + RCA Audio/Video Wall Plate - Black	0.39
42320	RapidRun Single Gang Integrated HD15 + 3.5mm + RCA Audio/Video Wall Plate - Brushed Aluminum	0.39

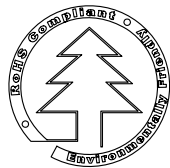
REV	ECO NO.	DATE
F	20092937	11-17-2009
G	20101616	11-02-2010
H	20110342	03-10-2011



METAL SCREW
RED TRIANGLE
THREAD



MANUFACTURED IN CHINA



<input type="checkbox"/> O
<input checked="" type="checkbox"/> S

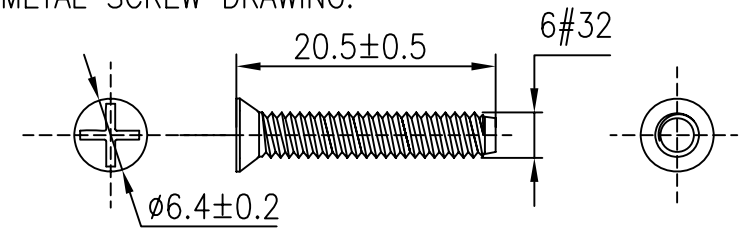
DRAWING APPROVED _____ DATE: _____		
SAMPLE APPROVED PER DRAWING SPECIFICATIONS _____ DATE: _____		
PROPRIETARY & CONFIDENTIAL. THE INFORMATION CONTAINED IN THIS DRAWING IS THE SOLE PROPERTY OF CABLES TO GO. ANY REPRODUCTION IN PART OR AS A WHOLE WITHOUT THE WRITTEN PERMISSION OF CABLES TO GO IS PROHIBITED.		
DIMENSIONAL TOLERANCES UNLESS OTHERWISE NOTED .X ± .XX ± .XXX ± ANGLES ± REV. H CUS. REV	TITLE DIN15P MALE TO HDB15P + 3 RCA + Ø3.5 STEREO CUS. NAME CTG CUS. P/N SEE P/N CHART DRAW NO. P0805012-E	ENG. Togo DATE 03-10-2011 CHECKED Sean DATE 03-10-2011 APPROVED Gary DATE 03-10-2011

NOTES:

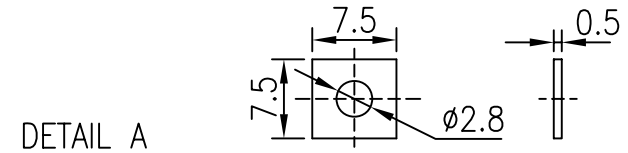
- ① (1) [28AWG X 1COAX, SPIRAL (90%MIN) SHIELDED, 75Ω, UL1354] X 3, PVC JACKET COLOR SEE PIN OUT.
- (2) WIRES: 24AWG, UL1061 .
- 2. CONNECTOR: P1: DIN 15PIN MALE, SOLDER TYPE, GOLD PLATED CONTACTS, BLACK INSULATION, ASSEMBLY TYPE, WITH METAL ASSEMBLY SHELL, WITHOUT KEY, NICKEL PLATED SHELL.
RCA FEMALE: LOCK PLANK TYPE, NICKEL PLATED CONTACTS AND SHELL, INSULATION COLOR SEE VIEW.
HIGH DENSITY D-SUB 15PIN FEMALE, PCB TYPE, GOLD FLASH CONTACTS, BLACK INSULATION, WITH NUT ON THE BACKSHELL.
3.5 STEREO JACK: SOLDER TYPE, NICKEL PLATED CONTACTS AND SHELL.
- ③ BLACK (CTG-001) ABS PLASTIC ASSEMBLY CASE.
- ④ METAL BRACKET: BRUSHED ALUMINUM 5052, RIGIDITY HRB22° ANODIZING.
LOGO MARKING AND SURFACE TREATMENT SEE THE P/N CHART.
- 5. METAL SCREW HEAD SURFACE TREATMENT SEE THE P/N CHART.
- ⑥ LABEL: WHITE BACKGROUND WITH BLACK LETTERS.
- ⑦ YELLOW HEAT SHRINK TUBE MUST BE SHRINKED.
- ⑧ STRAIN RELIEF HOOD: MOLDED BLACK (CTG-001) PVC.
- 9. ALL MATERIALS ARE RoHS COMPLIANT.
- 10. TESTING: 100% ELECTRICAL TEST AT 10M OHM INSULATION RESISTANCE.
- 11. PACKING: THEN EACH PRODUCT IN A SMALL WHITE BOX.

BAR CODE LABEL (WHITE BACKGROUND WITH BLACK LETTERS, SEE "DETAIL B") TO BE PASTED ON THE SMALL WHITE BOX.

METAL SCREW DRAWING:



PLASTIC GASKET DRAWING:



CODE UPC-A

"*" CHECK DIGIT

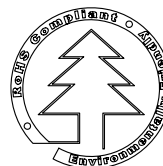
"xxxxx"&"XXXXXXXXXX" SEE "P/N CHART"

DETAIL B

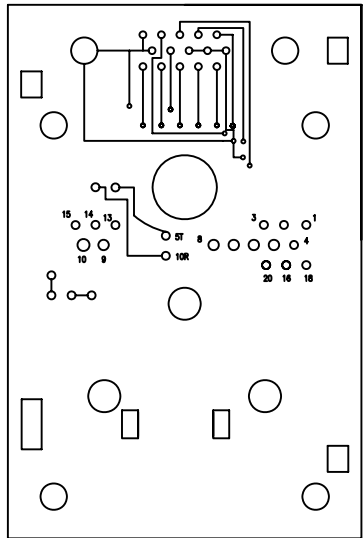
P/N CHART H1

42314	WHITE	BLACK (PANTONE BLACK C)	42314	BLACK (PANTONE BLACK C)	RAPIDRUN AL WALLPLATE HD15+3.5+3RCA BLK
42313	BLACK	WHITE (RAL9003)	42313	WHITE (RAL9003)	RAPIDRUN AL WALLPLATE HD15+3.5+3RCA WHT
42128	BLACK	IVORY (PANTONE 4545C)	42128	IVORY (PANTONE 4545C)	RR ALUM VGA+3.5MM +3RCA Ivory
42320	BLACK	ALUMINUM	42320	BLUE ZINC	RAPIDRUN AL WALLPLATE HD15+3.5+3RCA V.2
P/N	LOGO MARKING COLOR	SURFACE TREATMENT	BAR CODE xxxxx	METAL SCREW	XXXXXXXXXXXXXX

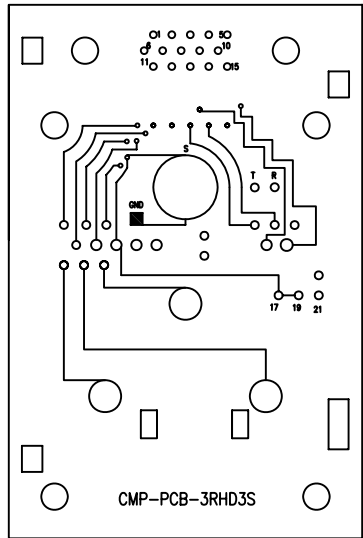
MANUFACTURED IN CHINA



DRAWING APPROVED _____ DATE: _____		SAMPLE APPROVED PER _____ DATE: _____	
PROPRIETARY & CONFIDENTIAL. THE INFORMATION CONTAINED IN THIS DRAWING IS THE SOLE PROPERTY OF CABLES TO GO. ANY REPRODUCTION IN PART OR AS A WHOLE WITHOUT THE WRITTEN PERMISSION OF CABLES TO GO IS PROHIBITED.			
mm	TITLE		
SCALE NONE	DIN15P MALE TO HDB15P + 3 RCA + 3.5 STEREO		
SHEET 2/4	CUS. NAME	CTG	
DIMENSIONAL TOLERANCES UNLESS OTHERWISE NOTED		CUS. P/N	
.X ±	.XX ±	SEE P/N CHART	
.XXX ±	ANGLES ±	DRAW NO.	
REV. H	CUS. REV	P0805012-E	
ENG. Togo		DATE 03-10-2011	
CHECKED Sean		DATE 03-10-2011	
APPROVED Gary		DATE 03-10-2011	

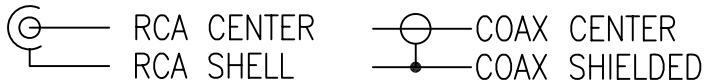


PCB SOLDER SURFACE

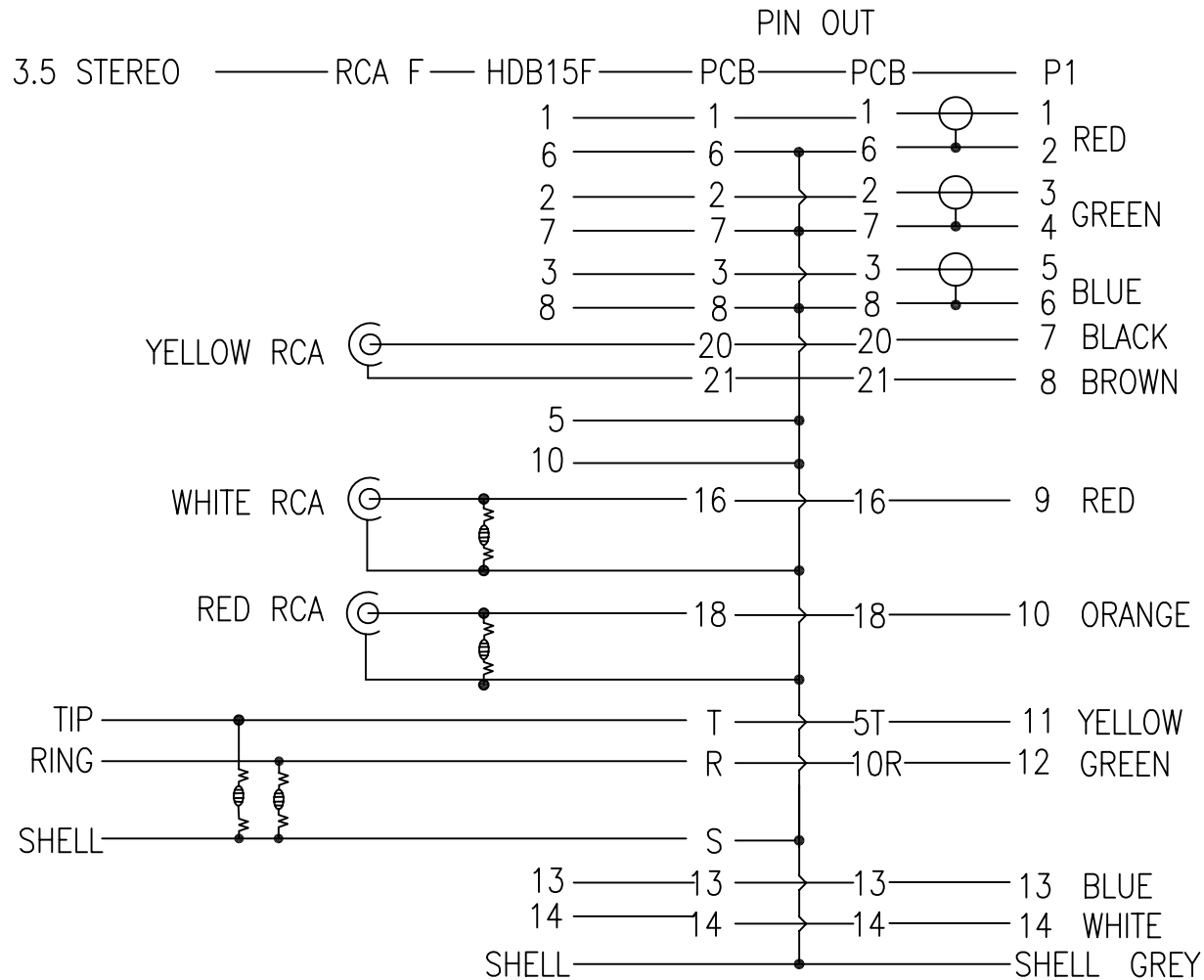


PCB FRONT SURFACE

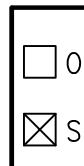
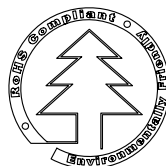
CMP-PCB-3RHD3S




1/8 WATT 100 OHM CARBON FILM RESISTORS



MANUFACTURED IN CHINA



DRAWING APPROVED _____ DATE: _____		SAMPLE APPROVED PER _____ DATE: _____	
DRAWING SPECIFICATIONS			
PROPRIETARY & CONFIDENTIAL. THE INFORMATION CONTAINED IN THIS DRAWING IS THE SOLE PROPERTY OF CABLES TO GO. ANY REPRODUCTION IN PART OR AS A WHOLE WITHOUT THE WRITTEN PERMISSION OF CABLES TO GO IS PROHIBITED.			
mm	TITLE	 Service Through Every Connection	
SCALE	DIN15P MALE TO HDB15P + 3 RCA + Ø3.5 STEREO		
SHEET	CUS. NAME	CTG	
DIMENSIONAL TOLERANCES UNLESS OTHERWISE NOTED		CUS. P/N	
.X ±	.XX ±	SEE P/N CHART	
.XXX ±	ANGLES ±	DRAW NO.	
REV. H	CUS. REV	P0805012-E	
		ENG. Togo 03-10-2011	
		CHECKED Sean 03-10-2011	
		APPROVED Gary 03-10-2011	